

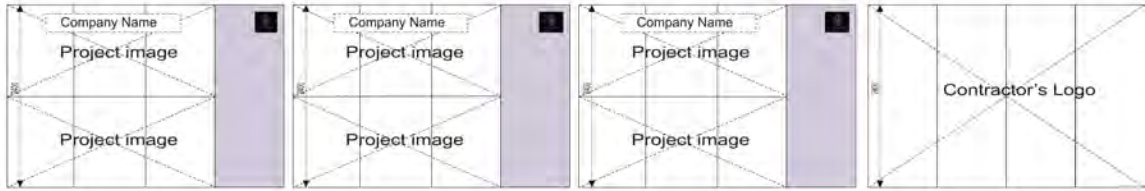
Color Palette for Temporary Site Hoarding

R: 253
G: 247
B: 213



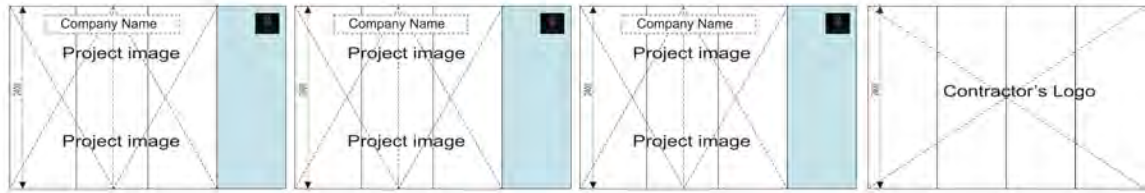
Villa Development

R: 217
G: 204
B: 237



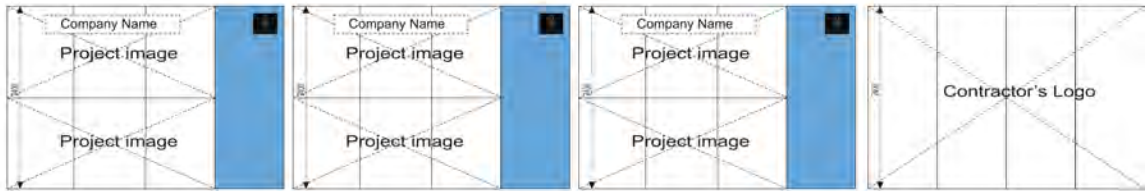
Apartment Development

R: 190
G: 245
B: 255



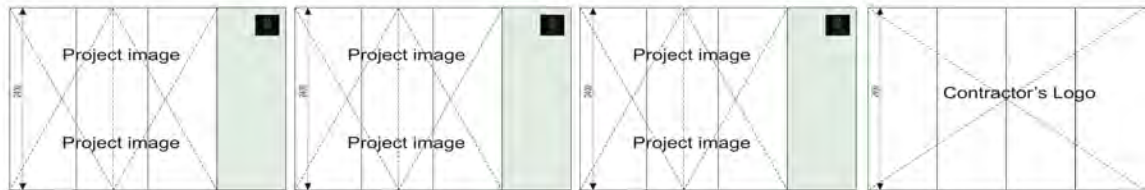
Commercial Development

R: 89
G: 167
B: 255



Mixed-Use Development

R: 223
G: 242
B: 229



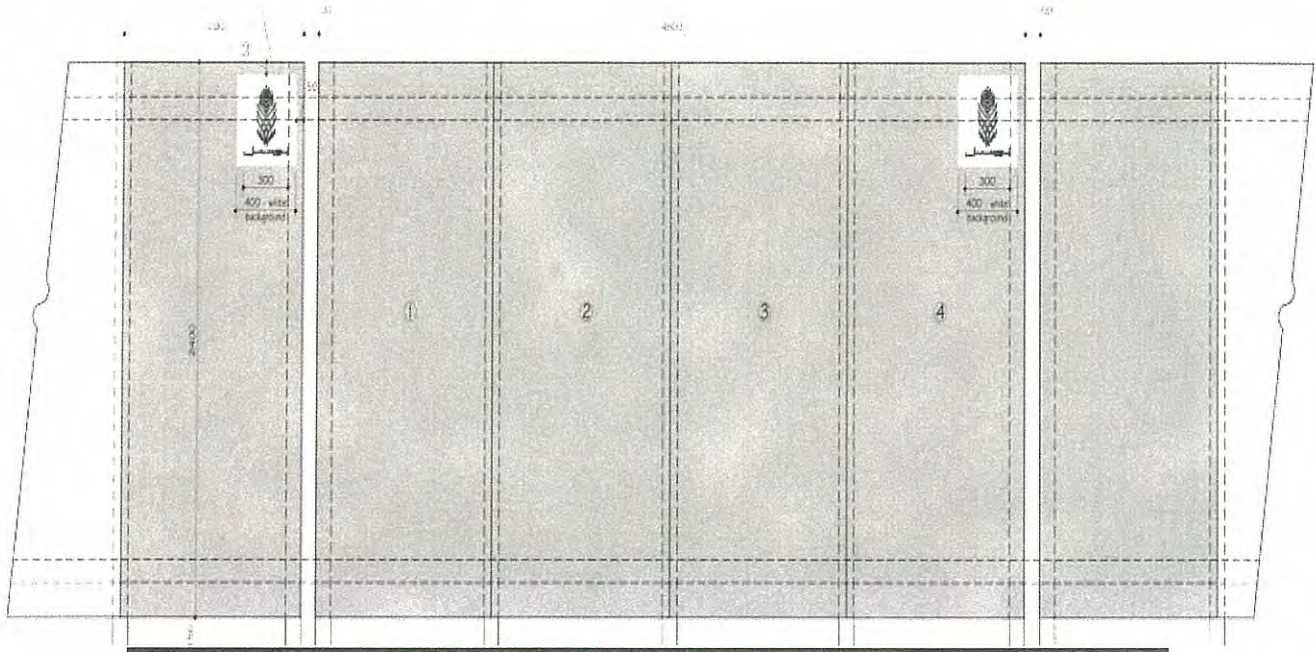
Public Buildings (ex: Mosque, schools, Hospitals, Post office, Fire station, etc.)

Note:

Image design arrangement is optional and subject to LAC approval



- Lusail Logo and Text
Color – Pantone 871 metallic



Typical Temporary Site Hoarding

Notes:

- All Dimensions are in millimeters.
- Site hoardings should be combined in 4 panel groups with the Lusail logo on the top right corner.
- Lusail logo should be on a separate 400 x 400 panel, 10mm thick and mounted onto the main hoarding.
- All exposed surfaces of the hoarding should be painted as per the stipulated color coding of the development.
- Where existing infrastructure may hinder the construction of the hoarding, adequate structural supports above ground must be proved for structural stability. All such supports must be located on the rear faces of the hoarding.